

PURPOSE:	DIVISION	AREA NAME:	MOUNT BARKER	APPROVED:	
MAP REF:	6627/07/M	COUNCIL:	MOUNT BARKER DISTRICT COUNCIL	DEPOSITED/FILED:	
LAST PLAN:	D118522	DEVELOPMENT NO:	580/D039/15/003		SHEET 1 OF 4
					62572_text_01_v01

State Commission Assessment Panel
LAND DIVISION CERTIFICATE
 Approved in accordance with the requirements
 of Section 51 of the Development Act 1993

Signed 
Description of signatory: Land Division Coordinator,
 Land Boundaries

Dated: 21/09/2018, 10:56 am Biljana Prokic

AGENT DETAILS:	FYFE PTY LTD LEVEL 1, 124 SOUTH TERRACE ADELAIDE SA 5000 PH: 82019600 FAX:	SURVEYORS CERTIFICATION:
AGENT CODE:	ALRF	
REFERENCE:	21003/21 DC22-R0	

SUBJECT TITLE DETAILS:

PREFIX	VOLUME	FOLIO	OTHER	PARCEL	NUMBER	PLAN	NUMBER HUNDRED / IA / DIVISION	TOWN	REFERENCE NUMBER
CT	6207	549		ALLOTMENT(S) COMPRISING PIECES	(3005*,3006*)	D	118522 MACCLESFIELD		

OTHER TITLES AFFECTED:

EASEMENT DETAILS:

STATUS	LAND BURDENED	FORM	CATEGORY	IDENTIFIER	PURPOSE	IN FAVOUR OF	CREATION
EXISTING	3008*	SERVICE	EASEMENT(S)	C	FOR ELECTRICITY SUPPLY PURPOSES	DISTRIBUTION LESSOR CORPORATION (SUBJECT TO LEASE 8890000)	223LG RPA
EXISTING	3008*	SERVICE	EASEMENT(S)	E(T/F)	FOR ELECTRICITY SUPPLY PURPOSES	DISTRIBUTION LESSOR CORPORATION (SUBJECT TO LEASE 8890000)	223LG RPA
NEW	2040-2045.2063-2067 .2098.2099.3008*	SERVICE	EASEMENT(S)	D	FOR DRAINAGE PURPOSES	THE COUNCIL FOR THE AREA	223LG RPA
NEW	3008*	SERVICE	EASEMENT(S)	L	FOR ELECTRICITY SUPPLY PURPOSES	DISTRIBUTION LESSOR CORPORATION (SUBJECT TO LEASE 8890000)	223LG RPA
NEW	2054.3008*	SERVICE	EASEMENT(S)	G(T/F)	FOR ELECTRICITY SUPPLY PURPOSES	DISTRIBUTION LESSOR CORPORATION (SUBJECT TO LEASE 8890000)	223LG RPA
NEW	3008*	SERVICE	EASEMENT(S)	H	FOR WATER SUPPLY PURPOSES	SOUTH AUSTRALIAN WATER CORPORATION	223LG RPA

ANNOTATIONS:

REFERENCE MARKS

CNR	BEARING	FROM	DIST	PM NUMBER
1	229°01'	PM FD	1-01	6627/13955
3	88°04'	PM FD	10-32	6627/21780
4	180°40'	PM FD	1-0	6627/22768
5	180°34'	PM FD	8-37	6627/13274

PIECES SCHEDULE

ONE ALLOTMENT COMPRISES	TOTAL AREA
3007* AND 3008*	24.19ha

* ASTERISK DENOTES PIECE IDENTIFIER ONLY

SHEET 2 OF 4

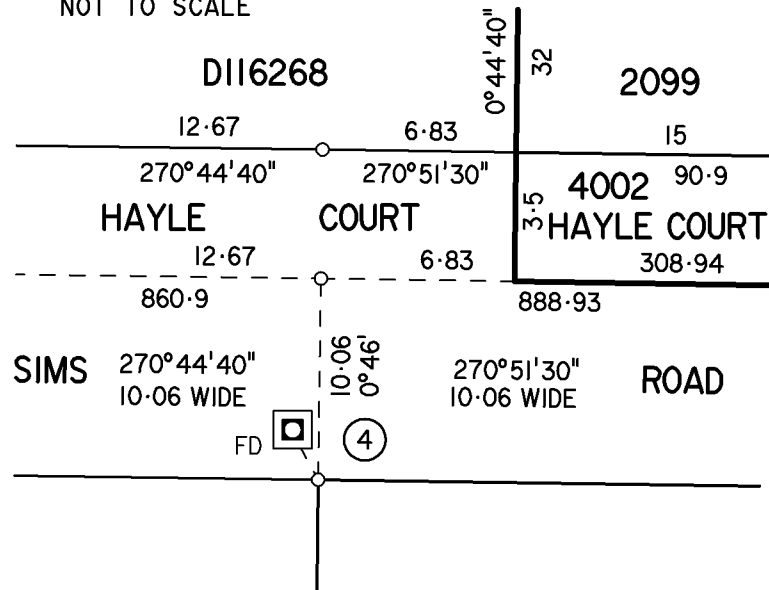
62572_pland_1_V01

BEARING DATUM: MGA 94 ZONE 54
DERIVATION: PM 6627/21780 - 6627/13274

TOTAL AREA: 26.33ha

ENLARGEMENT B2

NOT TO SCALE



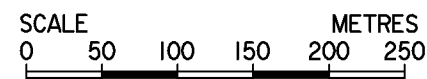
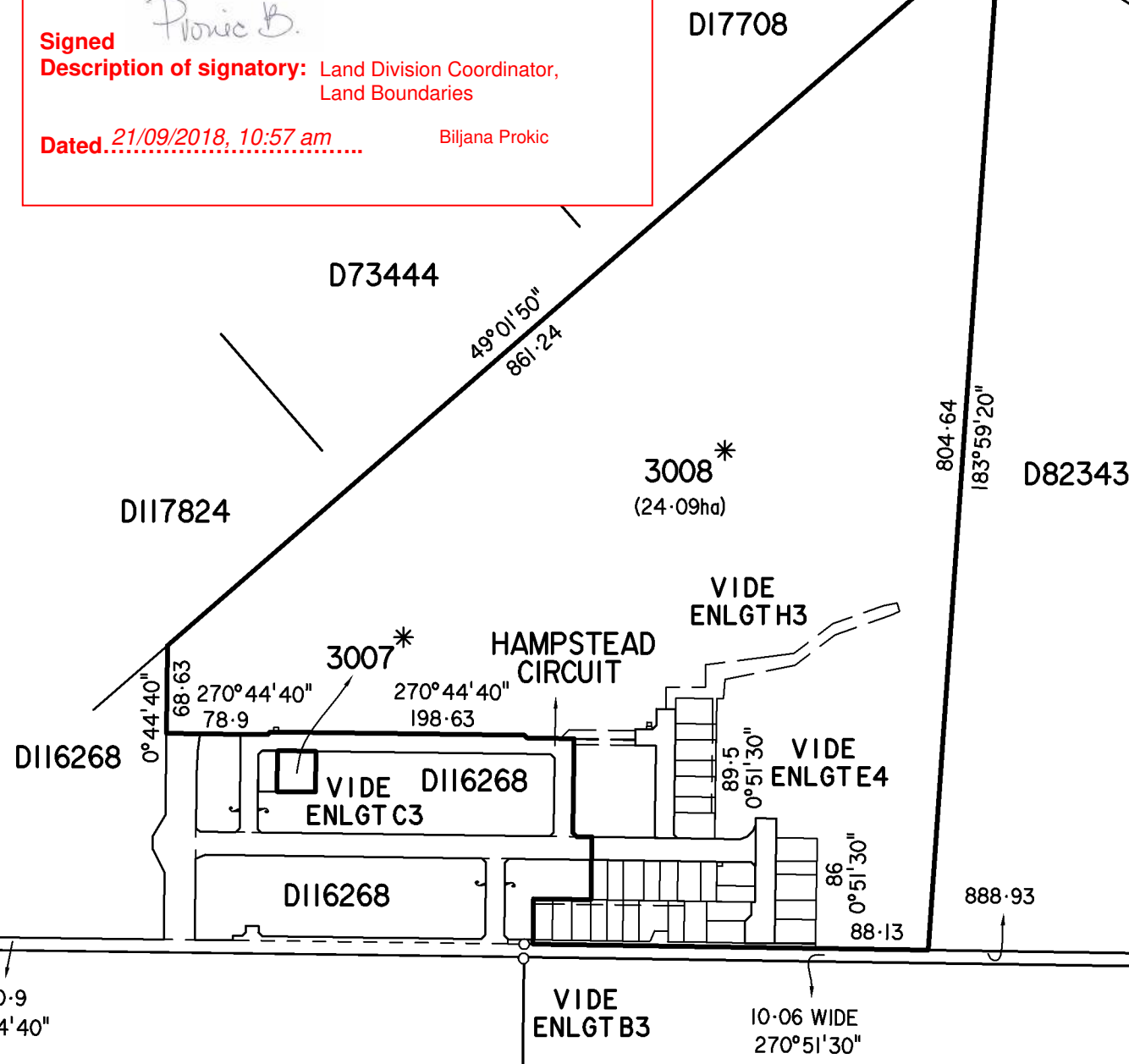
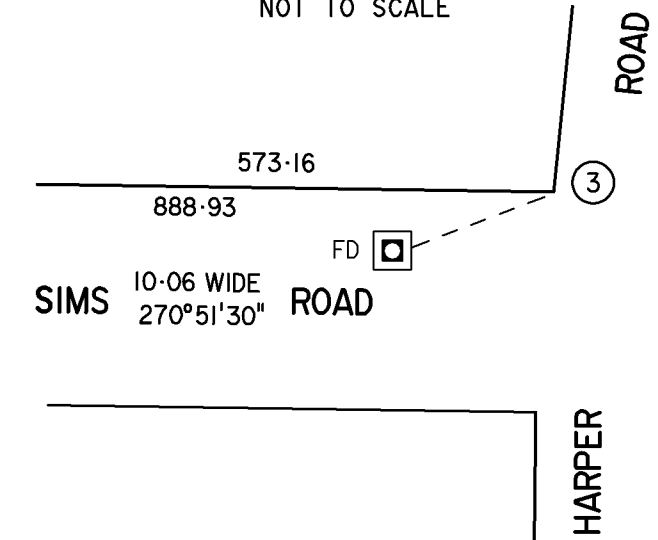
State Commission Assessment Panel
LAND DIVISION CERTIFICATE

Approved in accordance with the requirements
of Section 51 of the Development Act 1993

Signed *Biljana Prokic*
Description of signatory: Land Division Coordinator,
Land Boundaries
Dated: 21/09/2018, 10:57 am Biljana Prokic

ENLARGEMENT A2

NOT TO SCALE



FYFE PTY LTD STAGE 2A
SURVEYORS and ENGINEERS
Level 1, 124 SOUTH TERRACE, ADELAIDE SA 5000
PHONE (08) 8201 9600 EMAIL lto.correspondence@fyfe.com.au
www.fyfe.com.au ABN 57 008 116 130
Reference 21003/21/8 Dwg No. 21003DC22-R0
QA REV 0 DATE 02/05/2018 DR KGH SVY CM

D116268

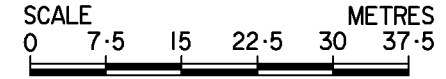
0°44'40"

68.63

3008 *

E(T/F) VIDE ENLGT D3

ENLARGEMENT C3



SHEET 3 OF 4

62572_pland_2_V01

BOULEVARD

0°44'40" 24 WIDE

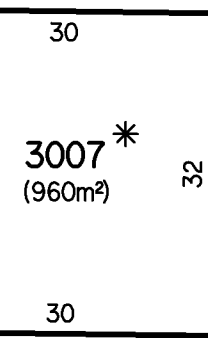
D116268

HAMPSTEAD

0°44'40" 14 WIDE

45°44'40"

315°44'40"



270°44'40"

D116268

REFERENCE MARKS

CNR	BEARING	FROM	DIST	PM NUMBER
7	62°17'	PM FD	4.81	6627/28522

GRANTCHESTER AVENUE

270°44'40" 18 WIDE

HEYSEN

0°44'40" 24 WIDE

VIDE CONTINUATION ENLARGEMENT E4

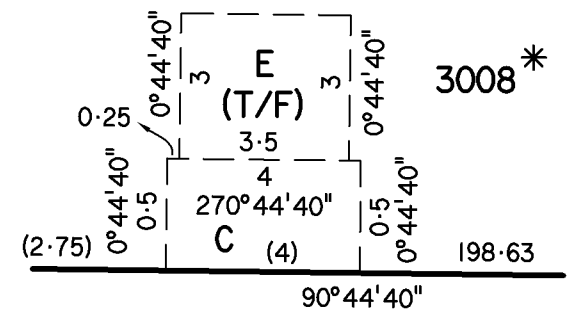
ENLARGEMENT H3 NOT TO SCALE

State Commission Assessment Panel LAND DIVISION CERTIFICATE

Approved in accordance with the requirements of Section 51 of the Development Act 1993

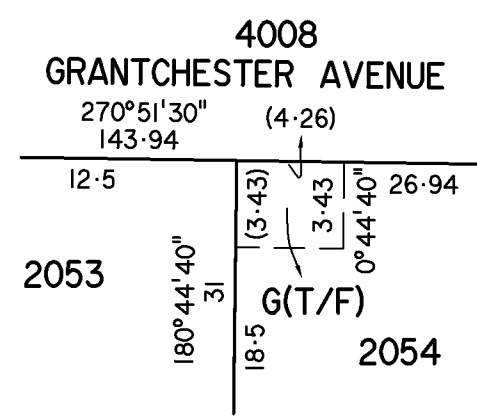
Signed *Pronik B.*
 Description of signatory: Land Division Coordinator, Land Boundaries
 Dated: 21/09/2018, 10:57 am Biljana Prokic

ENLARGEMENT D3 NOT TO SCALE



HAMPSTEAD CIRCUIT

ENLARGEMENT G3 NOT TO SCALE



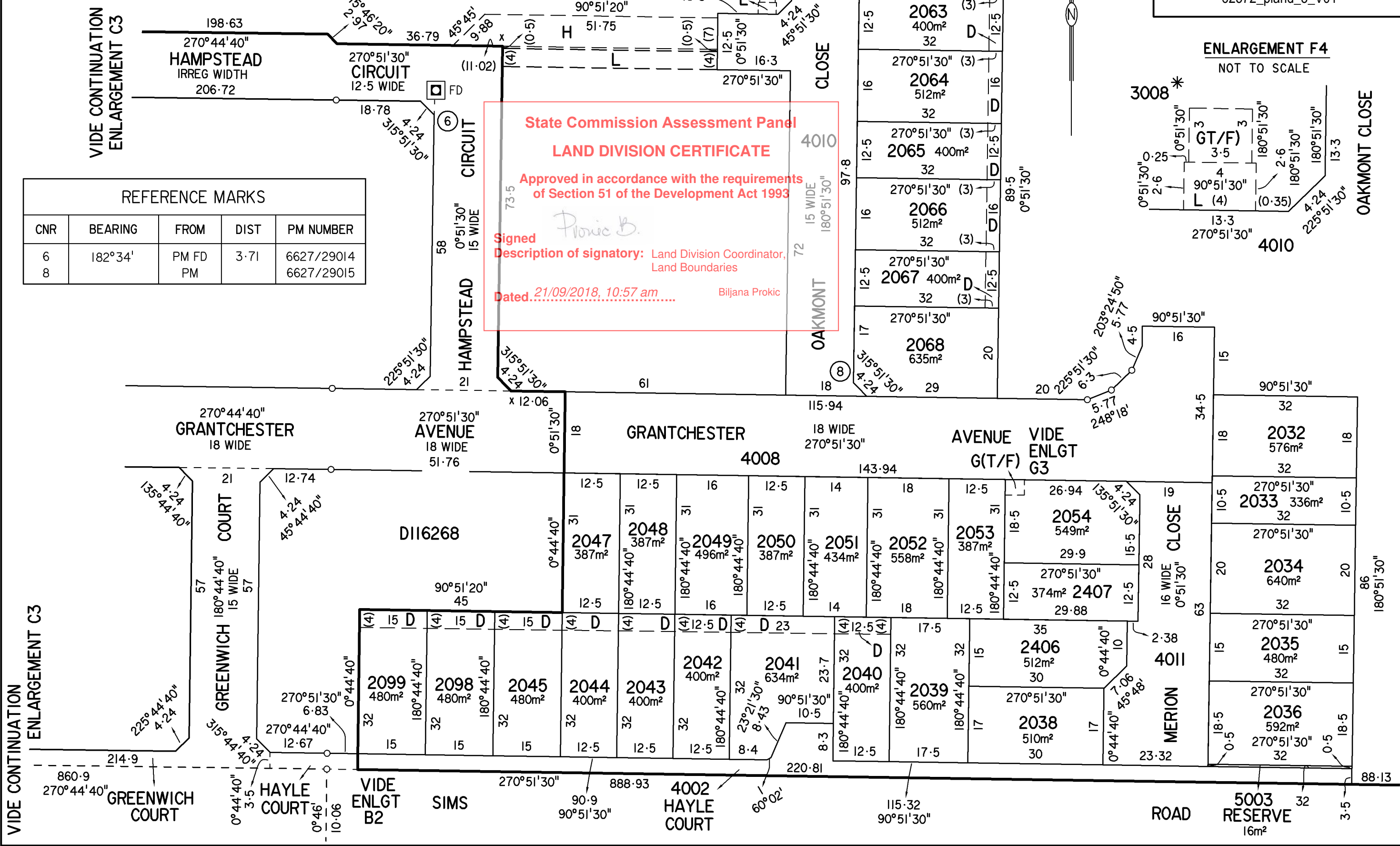
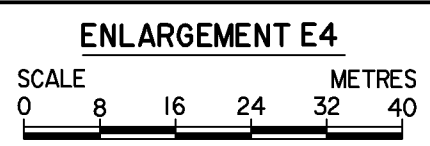
4008 GRANTCHESTER AVENUE

270°51'30" 143.94 (4.26)

12.5 180°44'40" 31 18.5 3.43 3.43 0°44'40" 26.94

2053 2054 G(T/F)

FYFE PTY LTD STAGE 2A
 SURVEYORS and ENGINEERS
 Level 1, 124 SOUTH TERRACE, ADELAIDE SA 5000
 PHONE (08) 8201 9600 EMAIL lto.correspondence@fyfe.com.au
 www.fyfe.com.au ABN 57 008 116 130
 Reference 21003/21/8 Dwg No. 21003DC22-R0
 REV 0 DATE 02/05/2018 DR KGH SVY CM



REFERENCE MARKS

CNR	BEARING	FROM	DIST	PM NUMBER
6	182°34'	PM FD	3.71	6627/29014
8		PM		6627/29015

State Commission Assessment Panel
LAND DIVISION CERTIFICATE
 Approved in accordance with the requirements
 of Section 51 of the Development Act 1993
 Signed *Biljana Prokic*
 Description of signatory: Land Division Coordinator,
 Land Boundaries
 Dated: 21/09/2018, 10:57 am Biljana Prokic

